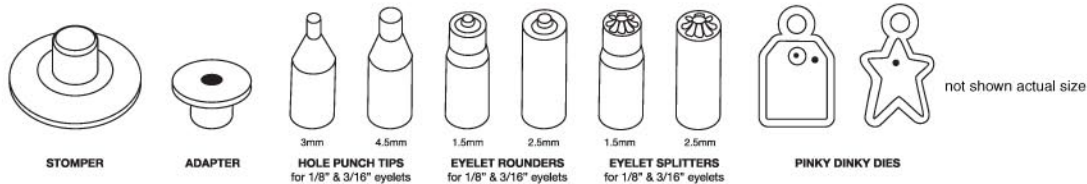


Scraparatus™



The Scraparatus™ Starter Set includes tool, Stomp Pad, Stomp Stone and the following tips and dies:



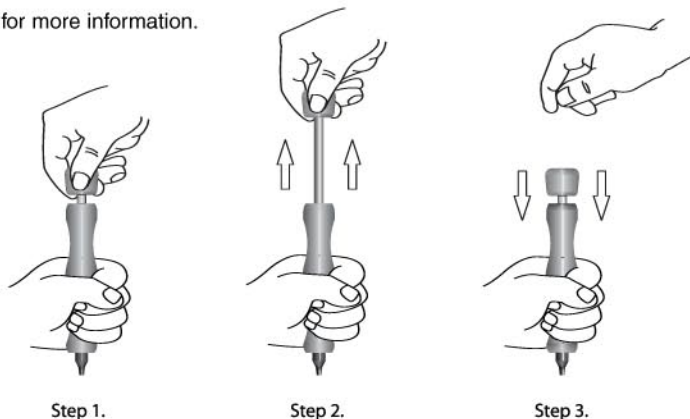
Instructions

READ ALL INSTRUCTIONS BEFORE USING SCRAPARATUS™

General Instructions

Always use the clear *Stomp Pad on top of the stone (both pieces included) as your Scraparatus™ work surface. Damage may occur if it is used without the pad and stone. Turn the Stomp Pad over periodically to prevent warping.

1. To punch holes, set eyelets and cut dies, insert the desired tip into the magnetic hole in the end of Scraparatus™.
2. Place the tip on your project and hold the tool firmly in place by grasping the handle with one hand. For optimum performance make sure Scraparatus™ is completely vertical and not tipped at an angle.
3. With the other hand, pull up on the tool's silver-colored knob releasing quickly so the knob falls back into place. The knob does not need to extend to its entire length to operate correctly. The most efficient motion is a "snap" achieved by letting go of the knob as you are still lifting upward. Repeat if necessary.
4. The silver-colored Adapter Tip (included) allows you to use previous embossing, debossing, punching and setting tips from Karen Foster Design.
4. Visit www.scraparatus.com for more information.



Die-Cutting Instructions

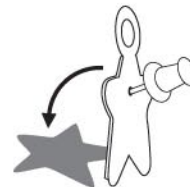
Cut alphabets and shapes using Scraparatus™, coordinating Die Sets and Stomper. You can use both positive and negative shapes in your projects.

1. To die-cut shapes from paper or cardstock, insert the Stomper. Hold Scraparatus™ vertically so the large flat area of the Stomper rests directly on top of the center of the die.
2. "Stomp" the die a few times (follow steps 2-3 in "General Instructions"). For larger dies, move the Stomper to several positions around the die "stomping" once or twice in each new position so all the edges are "stomped".
3. To ensure the cutting is successful, place your finger on the die to keep it in place and turn over the paper to check the back.
4. If some portions are not cut through, lay the paper back down and "stomp" the uncut areas. Check the back again. If the die is removed and the image is not completely cut through, simply reposition the die by feeling with your index finger that the die is resting in the right spot. "Stomp" again.
5. Remove the cut image from the die by poking a push pin through the release hole in the die (see illustration).

Hole Punching Instructions

Holes in projects can be used to lace, set eyelets, or create a decorative image, etc.

1. Insert a hole-punching tip in Scraparatus™.
2. Follow steps 2-3 in "General Instructions". Punching holes usually takes one "snap."
3. The hole-punching tips are self-cleaning. If, however, a punch remains in a tip, gently flick it out with a push pin.



Eyelet Setting Instructions

Included tips will set 1/8" (3.2mm) and 3/16" (4.5mm) shaped or circular eyelets. Eyelets are great for lacing, attaching papers together or as a decoration.

1. Insert a setting tip (rounder or splitter) into Scraparatus™. For pre-split eyelets, use Splitter Tip.
2. With the project facing down, insert the back of the eyelet up through the hole.
3. Position the setting tip into the back of the eyelet.
4. Follow steps 2-3 in "General Instructions". Setting eyelets usually takes one or two "snaps" depending on the type of metal.
5. To flatten the eyelet back, insert Stomper and "stomp" lightly.
6. Brass eyelets take a full "stomp" and aluminum eyelets take a half "stomp".

WARNING:

Use with care. Always aim Scraparatus™ so the tip points toward your work surface when in use. If aimed elsewhere, tips can shoot out of the tool and may cause damage. Remove tips from the tool when it is not in use. Keep out of the reach of children. Small parts may be a choking hazard or may cause cuts.

*The tool, tips and dies are not meant to strike hard surfaces. Doing so may cause damage which is not covered under warranty. Always use the Stomp Pad on top of the stone as your work surface. Karen Foster Design is not responsible for the manner in which the tool is used. Damage to the project, work surface or surrounding objects is not covered by any warranty or guarantee.

LIMITED WARRANTY AND DISCLAIMER

Limited Warranty:

Karen Foster Design, Inc. (KFD) will repair or replace this tool if you discover a manufacturing defect within one (1) year of your purchase. To receive your customer return number, please visit www.karenfosterdesign.com and go to "Scraparatus™ Warranty" to fill out the customer return form, or write to Karen Foster Design, 623 North 1250 West, Centerville, Utah 84014, USA.

In order to make your warranty claim, you must return the defective tool or tool part to KFD along with your customer return number and your receipt showing the date of purchase. All returns must be made within one (1) year of your purchase of this product.

This warranty is expressly limited to manufacturing defects and expressly excludes damage resulting from or caused by: (1) product misuse or abuse; (2) normal wear and tear; (3) product modification; (4) product neglect; (5) shipping incident; or (6) acts of God or nature.

The limited warranty stated above is void if this product is used in any professional or commercial manner.

Disclaimer:

KFD MAKES NO OTHER EXPRESS OR IMPLIED WARRANTY WITH RESPECT TO THE PRODUCT OTHER THAN THE LIMITED WARRANTY SET FORTH ABOVE. NO KFD DEALER, AGENT, OR EMPLOYEE IS AUTHORIZED TO MAKE ANY MODIFICATION, EXTENSION, OR ADDITION TO THIS WARRANTY. UNLESS UNENFORCEABLE OR UNLAWFUL UNDER APPLICABLE LAW, KFD DISCLAIMS ALL IMPLIED WARRANTIES, INCLUDING THE IMPLIED WARRANTIES OF MERCHANTABILITY, NONINFRINGEMENT, AND FITNESS FOR A PARTICULAR PURPOSE. ANY LIABILITY OF KFD FOR DAMAGES RELATING TO ANY ALLEGEDLY DEFECTIVE PRODUCT SHALL, UNDER ANY TORT, CONTRACT, OR OTHER LEGAL THEORY, BE LIMITED TO THE ACTUAL PRICE PAID FOR SUCH PRODUCT AND SHALL IN NO EVENT INCLUDE INCIDENTAL, CONSEQUENTIAL, SPECIAL, OR INDIRECT DAMAGES OF ANY KIND, EVEN IF KFD IS AWARE OF THE POSSIBILITY OF SUCH DAMAGES.